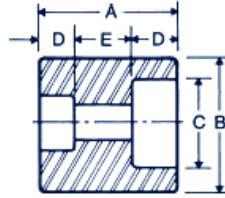




## DIMENSIONAL DATA

### SW Reducer



Class 3000	<b>Nominal Pipe Size</b>	1/8	1/4	3/8	1/2	3/4	1	1 1/4	1 1/2	2	2 1/2	3	4
	<b>A</b>	1 1/32	1 1/32	1 1/32	1 3/16	1 13/32	1 33/64	1 33/64	1 33/64	2 1/64	2 1/64	2 1/64	2 17/64
	<b>B</b>	3/4	7/8	1 1/16	1 1/4	1 1/2	1 13/16	2 1/4	2 1/2	3	3 5/8	4 5/16	5 1/2
	<b>C</b>	0.420	0.555	0.690	0.855	1.065	1.330	1.675	1.915	2.406	2.906	3.535	4.545
	<b>D</b>	7/16	7/16	7/16	1/2	9/16	5/8	11/16	3/4	7/8	7/8	1	1 1/8
	<b>E</b>	1/4	1/4	1/4	3/8	3/8	1/2	1/2	1/2	3/4	3/4	3/4	3/4
	<b>Wt</b>	0.125	0.125	0.125	0.188	0.313	0.563	0.813	1.000	2.000	2.625	3.875	6.625
Class 6000	<b>Nominal Pipe Size</b>	1/8	1/4	3/8	1/2	3/4	1	1 1/4	1 1/2	2	2 1/2	3	4
	<b>A</b>	1 1/16	1 1/8	1 1/8	1 5/32	1 13/32	1 33/64	1 33/64	1 33/64	2 1/64	2 1/64	2 1/64	2 17/64
	<b>B</b>	7/8	1 1/16	1 5/16	1 1/2	1 3/4	2 1/4	2 1/2	3	3 5/8	4 1/4	5	6 1/4
	<b>C</b>	0.420	0.555	0.690	0.855	1.065	1.330	1.675	1.915	2.406	2.906	3.535	4.545
	<b>D</b>	7/16	7/16	7/16	1/2	9/16	5/8	11/16	3/4	7/8	7/8	1	1 1/8
	<b>E</b>	1/4	1/4	1/4	3/8	3/8	1/2	1/2	1/2	3/4	3/4	3/4	3/4
	<b>Wt</b>	-	-	-	0.375	0.563	1.000	1.438	2.000	3.875	5.500	6.625	13.125
Class 9000 XXS Bore	<b>Nominal Pipe Size</b>	1/8	1/4	3/8	1/2	3/4	1	1 1/4	1 1/2	2			
	<b>A</b>	-	-	-	1 3/8	1 1/2	1 3/4	1 7/8	2	2 1/2			
	<b>B</b>	-	-	-	1 13/16	2	2 3/8	2 3/4	3 1/16	3 5/8			
	<b>C</b>	-	-	-	0.855	1.065	1.330	1.675	1.915	2.406			
	<b>D</b>	-	-	-	1/2	9/16	5/8	11/16	3/4	7/8			
	<b>E</b>	-	-	-	3/8	3/8	1/2	1/2	1/2	3/4			
	<b>Wt</b>	-	-	-	0.75	1.06	1.69	2.22	2.81	4.66			